

Lifting Eye Bolt - Grade 80

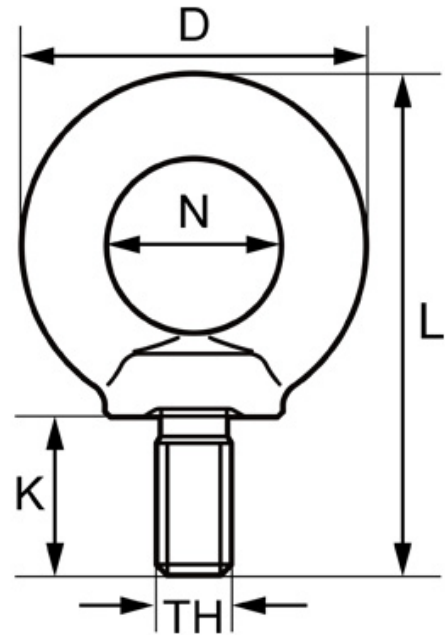
Fatigue rated x 1.5 WLL for 20,000 cycles

Proof Tested - 2.5 times working load limit

100% Magnaflux crack detected

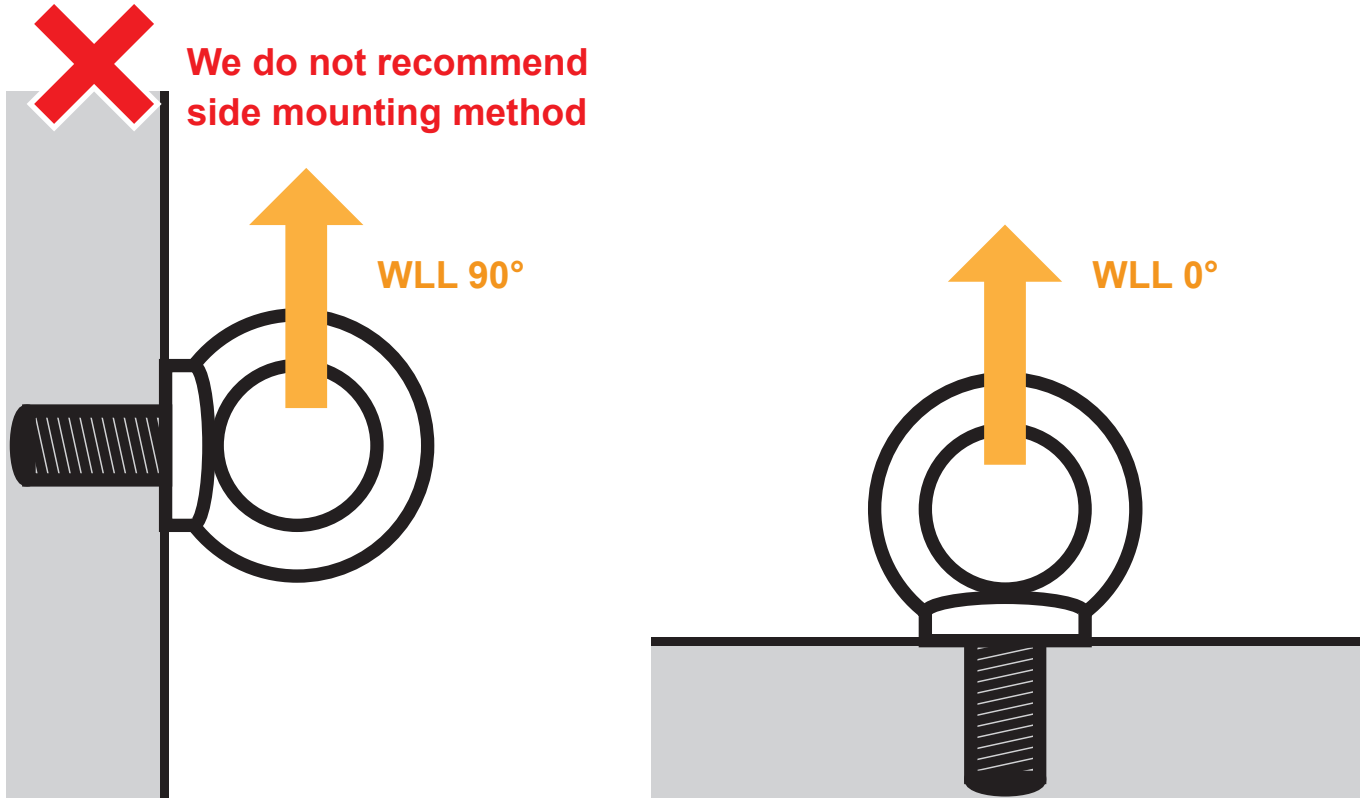
Super alloy steel - Grade 80

Safety factor 4.1



Part Code	Thread (TH)	Weight kg	WLL (T) 0°	WLL (T) 90°	D	K	L	N
XN054-M06	M6	0.05	0.4	0.15	28	13	42	16
XN054-M08	M8	0.06	1	0.4	36	15	51	20
XN054-M10	M10	0.11	1	0.4	45	18	63	25
XN054-M12	M12	0.18	2	0.75	54	22	75	30
XN054-M16	M16	0.28	4	1.5	63	28	88	35
XN054-M20	M20	0.45	6	2.3	72	30	101	40
XN054-M24	M24	0.87	8	3.2	90	38	128	50
XN054-M30	M30	1.66	12	4.5	108	45	154	60
XN054-M36	M36	2.65	16	7	126	55	183	70
XN054-M42	M42	4.03	24	9	144	65	212	80
XN054-M48	M48	6.38	32	12	166	70	238	90

Lifting Eye Bolt - Grade 80



Size	1 Point 0° (T)	1 Point 90° (T)	2 Point 0° (T)	2 Points 90° (T)	2 Points 0-45° (T)	2 Points 45-60° (T)	3/4 Points 0-45° (T)	3/4 Points 45-60° (T)	3/4 Points Unsym° (T)
M6	0.4	0.15	0.8	0.3	0.21	0.15	0.32	0.23	0.15
M8	1	0.4	2	0.8	0.56	0.4	0.84	0.6	0.4
M10	1	0.4	2	0.8	0.56	0.4	0.84	0.6	0.4
M12	2	0.75	4	1.5	1.05	0.75	1.58	1.13	0.75
M16	4	1.5	8	3	2.1	1.5	3.15	2.25	1.5
M20	6	2.3	12	4.6	3.22	2.3	4.83	3.45	2.3
M24	8	3.2	16	6.4	4.48	3.2	6.72	4.8	3.2
M30	12	4.5	24	9	6.3	4.5	9.5	6.8	4.5
M36	16	7	32	14	9.8	7	14.7	10.5	7
M42	24	9	48	18	12.6	9	18.9	13.5	9
M48	32	12	64	24	16.8	12	25.2	18	12