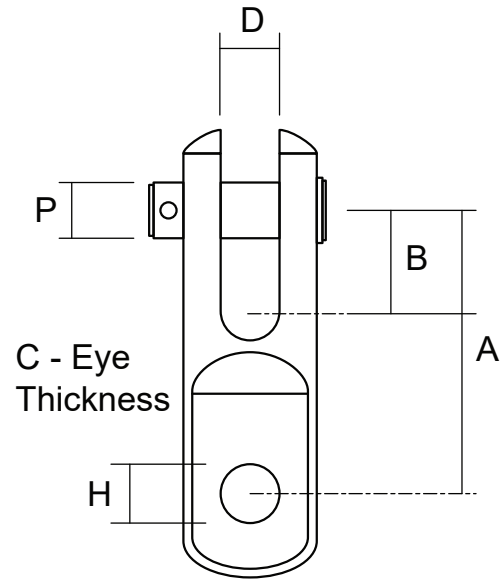


Eye to Jaw Bar Rigging Toggle - 316 Stainless Steel

STA-LOK[®]



Code	Pin Ø (P) (mm)	Pin Ø (P) (INCH)	A (mm)	B (mm)	C (mm)	D (mm)	H (mm)
S-14BT	6.2	1/4"	29.1	13.2	6	6.4	6.4
S-516BT	7.7	5/16"	38.6	14.7	7.4	7.9	7.9
S-38BT	9.3	3/8"	49.1	17.5	8.9	9.5	10
S-716BT	10.9	7/16"	60.4	21.9	10.4	11.1	11.4
S-12BT	12.6	1/2"	74.1	27.4	12	12.7	13
S-58BT	15.6	5/8"	81.6	29.2	13.5	15.9	16
S-34BT	18.5	3/4"	92.2	33.3	18.4	19.1	19.1
S-78BT	21.5	7/8"	110.6	38.1	20	22.2	22.2
S-100BT	25	1"	121.3	40	23.5	25.4	25.4
S-118BT	28.2	1 1/8"	148.4	50	27	28.6	28.6
S-114BT	31.5	1 1/4"	174.6	60	30.7	32	31.8
S-138BT	34.6	1 3/8"	185	70	33.3	35	35

A note about dimensional information

Please be aware that dimensions published on our site should be treated as indicative.

We publish dimensions to the best of our ability, however manufacturers can, from time to time, make small alterations to their designs.

If your dimensional criteria is critical please do contact us prior to making your purchase to let us know and we will do our best to fulfil your requirements.